

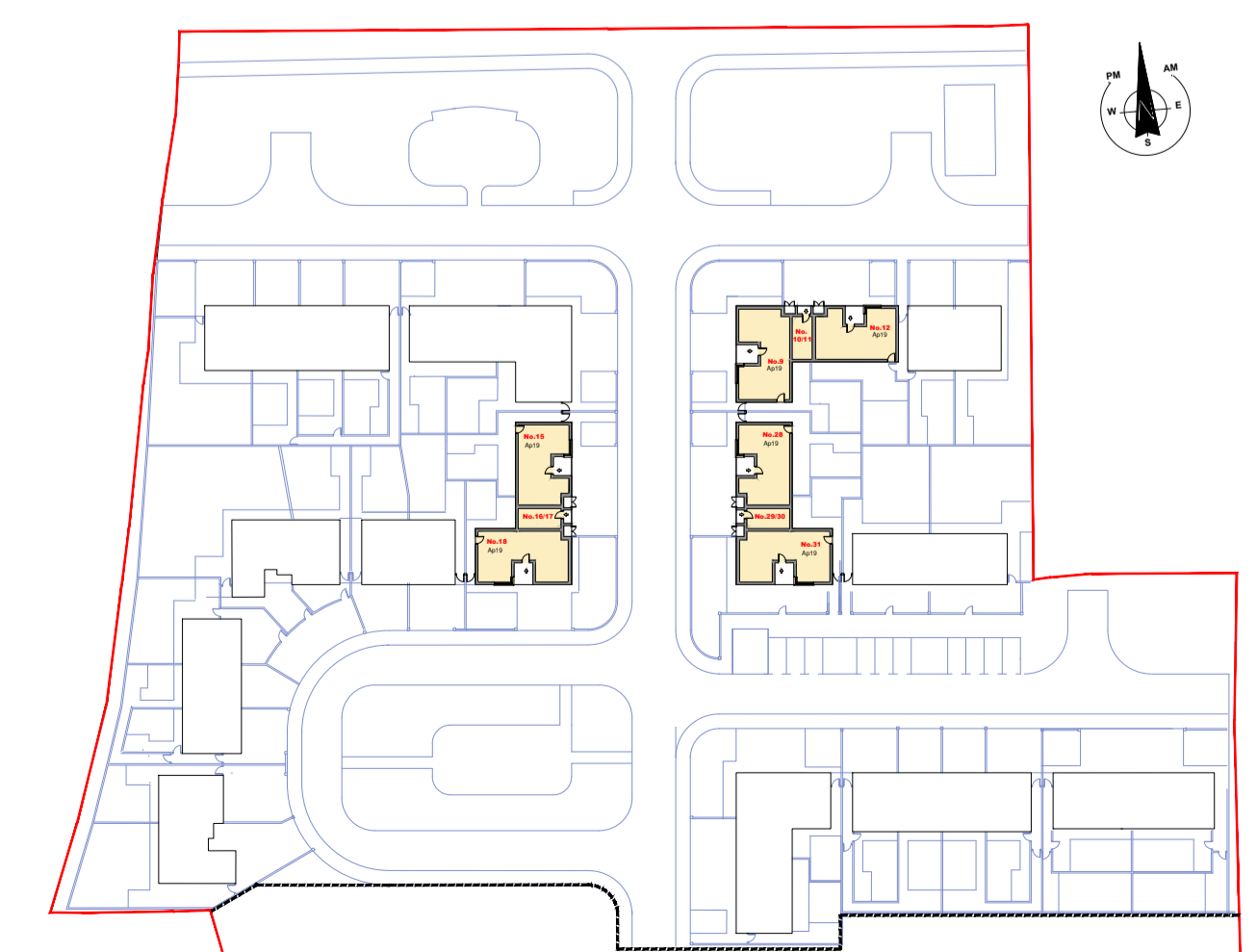
**Apartment Type 19 (Unit No. 9-12,15-18,28-31 & 42-45)**

Quality Housing for Sustainable Communities Standards

2 Bedroom / 3 Person Apartment Areas:						2 Bedroom / 4 Person Apartment Areas:							
Target Gross Floor Areas (m <sup>2</sup> )	Min-Main Living Room (m <sup>2</sup> )	Aggregate Living Area (m <sup>2</sup> )	Aggregate Bedroom Area (m <sup>2</sup> )	Storage (m <sup>2</sup> )	Private Amenity Space (m <sup>2</sup> )	Target Gross Floor Areas (m <sup>2</sup> )	Min-Main Living Room (m <sup>2</sup> )	Aggregate Living Area (m <sup>2</sup> )	Aggregate Bedroom Area (m <sup>2</sup> )	Storage (m <sup>2</sup> )	Private Amenity Space (m <sup>2</sup> )		
Required	63 sqm	13 sqm	28 sqm	20.1 sqm	5 sqm	6 sqm	Required	73 sqm	13 sqm	30 sqm	24.4 sqm	6 sqm	7 sqm
Provided - HT 19.1	68 sqm	-	28 sqm	20.2 sqm	5.4 sqm	(shared garden)	Provided - HT 19.2	76 sqm	-	30 sqm	24.5 sqm	6 sqm	(shared garden)
Provided - HT 19.3	68.3 sqm	-	28 sqm	20.2 sqm	5.1 sqm	6 sqm (balcony)	Provided - HT 19.4	76.3 sqm	-	30 sqm	25.3 sqm	7.3 sqm	7 sqm (balcony)

2 Bedroom / 3 Person Apartment Widths:					2 Bedroom / 4 Person Apartment Widths:						
Single Bedroom (m)	Double Bedroom (m)	Living Rm (1 Bed) (m)	Living Rm (2 Bed) (m)	Living Rm (3 Bed) (m)	Single Bedroom (m)	Double Bedroom (m)	Living Rm (1 Bed) (m)	Living Rm (2 Bed) (m)	Living Rm (3 Bed) (m)		
Required	2.1m	2.8m	3.3m	3.6m	3.8m	Required	2.1m	2.8m	3.3m	3.6m	3.8m
Provided - HT 19.1	2.4 m	2.9 m	-	-	3.9 m	Provided - HT 19.2	-	2.9 m, 3.25m	-	4.5 m	-
Provided - HT 19.3	2.4 m	3.2 m	-	-	3.9 m	Provided - HT 19.4	-	2.9 m, 3.25m	-	4.6 m	-



**Revisions**

XX	XX.XX.XX	XXX
Rev:	Date:	Details:

**Donegal County Council**  
Architects Office



DCC Tel: 074 91 53900 | DCC Fax: 074 91 72812

**PART VIII**

**Project:**  
Chapel Road,  
Dungloe,  
Co. Donegal

**Drawing Title:**  
House Type 19  
Block 3,5,10 and 14  
Units 9-12,15-18,28-31 and 42-45  
Plans, Elevation and Section

**Drawing No:** P8 - 06

Date: November 2021 | Scale: 1:100 @ A1

Drawn / Checked by: SD / TQ | Job No: HCG 01-20